



Technology Education Concepts

GCC
LaserPro

GCC LaserPro Family of Laser Engravers:

Safe • Reliable • Affordable

Laser Engravers are exciting, versatile, engaging, inspiring, and easy-to-use! Students practice critical thinking and problem solving skills, inspire their own creativity, and learn about "teamwork". Most importantly, they learn **workforce**

skills. Join with other Educators who use Laser Technologies for Enhanced Learning, "Entrepreneurship Education", Fundraising, School/District-Wide Applications, and much more!



NEW!

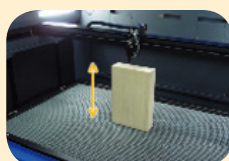
NEW LASER with Special Features!



SmartFLOW
Technology for
Optimized Airflow



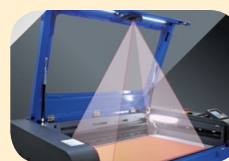
SmartSEAL Technology
for Dust Prevention &
Protection



High Z-Depth - Up
to 11"!



Intuitive Touch
Screen



SmartEYES for Easy
Positioning using
Live HD Camera



SmartLID Easy
Access Design

S400 Specifications:

Table Size	Standard Grid Cutting Table 40.1 x 24.1 in. (1019 x 613 mm)
Max. Work Area	40 x 24 in. (1016 x 610 mm) - HUGE!
Speed Control	Adjustable from 0.1-100% (Up to 16 color-linked speed settings per job)
Power Control	Adjustable from 0-100% (Up to 16 colors linked power setting per job)
Focusing System	SmartPIN Autofocus
Resolution (DPI)	Avail 125, 250, 300, 380, 500, 600, 760, 1000, 1500
Computer Interface	10 Base-T Ethernet, USB-A for USB storage, USB-2.0 for connection
Electrical	Below 80W, 100-240V AC Auto Switching/80W and above, 200-240V AC Auto Switching
Available Wattages	30W, 40W, 60W, 80W, 100W CO2/20W, 30W, 60W Fiber
Power Consumption	700W - 4400W

\$400

GCC's "Flagship" Model!



Images courtesy of Mr. Matt Makowiec, Teacher at West Genesee High School, NY. **LaserPro Laser: Mercury III**

Electronics Integration • Math Integration • Fundraising & Entrepreneurship • Recognition Awards • & More!



1-800-338-2238

www.TECedu.com

info@TECedu.com

Spirit LS

User-Friendly & Feature-Rich



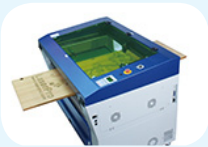
The MOST popular model Nationwide!

POWERED BY
SYNRAD
Made in the USA

Spirit LS CO2 Specifications:

Table Size	31.1 x 20.9 in (790 x 531 mm)
Max. Work Area	29 x 18 in. (740 x 457 mm)
Laser Source	Sealed CO2 Laser
Speed Control	Adjustable from 0.1-100% of 60 IPS (Up to 16 color-linked speed settings per job)
Power Control	Adjustable from 0-100% (Up to 16 colors linked power setting per job)
Focusing System	SmartPIN Autofocus
Resolution (DPI)	Avail 125, 250, 300, 380, 500, 600, 760, 1000, 1500
Computer Interface	Standard print port and USB 2 port
Electrical	Below 60W, 100-240V AC Auto Switching/80W and above, 200-240V AC Auto Switching
Available Wattages	12W, 25W, 30W, 40W, 60W, 80W
Power Consumption	700 W - 4400 W

Look for these STANDOUT features in GCC Laser Engravers!



Pass-through
Doors



SmartLID™
for easy
maintenance



SmartPIN™ Auto-
Focus



SmartCENTER™
AutoFocus
(patented)



Drag-N-Engrave
(Only in GCC
Lasers!)



Key Switch &
Emergency Stop

Spirit GLS Hybrid

Reliability & Flexibility in One!



**CO2 and/or Fiber
Hybrid Laser
Option!**

POWERED BY
SYNRAD
Made in the USA

Spirit GLS Hybrid Specifications:

Table Size	40.3 x 27.7 in. (1025 x 705 mm)
Max. Work Area	38 x 24 in. (860 x 610 mm)
Laser Source	Sealed CO2 Laser and/or Fiber Laser
Drive	Closed-loop DC Servo control
Speed Control	Adjustable from 0.1-100% (Up to 16 color-linked speed settings per job)
Power Control	Adjustable from 1~100% (UP to 16 colors linked power setting per job)
Focusing System	SmartPIN Autofocus
Resolution (DPI)	Available 125, 250, 300, 380, 500, 600, 760, 1000, 1500
Computer Interface	10 Base-T Ethernet, USB-A for USB storage, USB-2.0 for connection
Electrical	Below 80W, 100-240V AC Auto Switching/80W and above, 200-240V AC Auto Switching
Available Wattages	- 30W, 60W, 80W, 100W CO2 - 20W, 30W, 50W Fiber
Power Consumption	2000W-4400W

C180 II CO2 Laser Specifications:

Table Size	20.5 x 14.8 in. (520 x 375 mm)
Max. Work Area	18 x 12 in. (457 x 305 mm)
Laser Source	Sealed CO2 Laser
Drive	Closed-loop DC Servo control
Speed Control	Adjustable from 0.1~100% of 40 ips (Up to 16 color-linked speed settings per job)
Power Control	Adjustable from 0~100% (Up to 16 color-linked power settings per job)
Focusing System	SmartPIN Autofocus
Resolution (DPI)	Available 125, 250, 300, 380, 500, 600, 760, 1000
Computer Interface	10 Base-T Ethernet, Full speed 2.0 USB
Electrical	100~240 Volt AC Auto Switching
Available Wattages	12W, 30W, 40W
Power Consumption	700W- 2640W

Mercury III CO2 Laser Specifications:

Table Size	31.1 x 20.9 in. (790 x 530 mm)
Max. Work Area	25 x 18 in. (635 x 458 mm)
Laser Source	Sealed CO2 Laser
Drive	Closed-loop DC Servo control
Speed Control	Adjustable from 0.1-100% (Up to 16 color-linked speed settings per job)
Power Control	Adjustable from 0~100% (Up to 16 color-linked power settings per job)
Focusing System	SmartPIN AutoFocus
Resolution (DPI)	Available 125, 200, 300, 380, 500, 600, 760, 1000
Computer Interface	10 Base-T Ethernet, Full speed 2.0 USB
Electrical	Below 40W, 100~240 Volt AC Auto Switching; for 40W and above, 200~240 Volt AC Auto Switching
Available Wattages	12W, 30W, 40W, 60W
Power Consumption	700W, 880W, 2000W

S290LS Specifications:

Table Size	31.1 x 20.9 in. (790 x 530 mm)
Max. Work Area	29 x 18 in. (736 x 460 mm)
Laser Source	20/30/60 Watt Fiber Laser
Drive	Closed-loop DC Servo control
Cooling	Air cooled
Speed Control	Adjustable from 0.1-100% (Up to 16 color-linked speed settings per job)
Power Control	Adjustable from 1~100% (UP to 16 colors linked power setting per job)
Focusing System	SmartPIN Autofocus
Engraving capability	256-level gray scale image processing capability
Resolution (DPI)	Available 125, 250, 300, 380, 500, 600, 760, 1000, 1500, 3000
Computer Interface	10 Base-T Ethernet, Full speed 2.0 USB
Electrical	100V-240VAC, 50/60Hz Auto switching, MAX. 8A
Available Wattages	20W, 30W, 60W Fiber
Power Consumption	2200W-1320W

C180II Desktop

Powerful & compact with huge features!



POWERED BY
SYNRAD
Made in the USA

**Perfect for
Limited Spaces!**

Mercury III

The Economic "Workhorse!"



POWERED BY
SYNRAD
Made in the USA

S290LS

Fiber Laser Metal Marking System



**Perfect
for Direct Marking
on Metallic &
Plastic Material!**



Technology Education Concepts

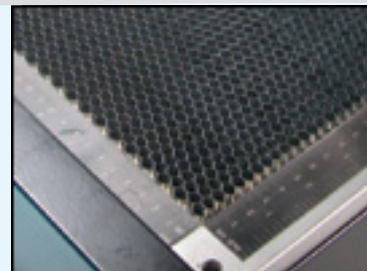
► Essentials!



Air Filtrations Systems from BOFA

The industry's first choice for fume and dust extraction!

BOFA keeps classroom environments safe by removing particulate and contaminants invisible to the human eye generated during laser processes. These state of the art air filtration and purification systems allow you to use your laser in any room and any environment *without the hassle of connecting outside duct work*. Several options are available, contact us to review other options or to if you need help determining which model would best fit your needs. *Please call for pricing.*



Aluminum Grid Cutting Tables

Allows for cutting 100% through materials like foam-core, acrylic and cardboard.

Model/Part number/price
Spirit LS
560-0100A \$330

Mercury III
560-0150A \$330

C180II
560-0112 \$360

Spirit GX or GLS
560-0118A \$440

TEC Air Assist Compressor

Targets a constant stream of compressed air directly across the laser cutting surface, ensuring quality engraving or cutting and reducing the possibility of flaming, scorching and charring when cutting materials such as wood, acrylic and rubber. 560-0102 \$550



► Terrific Additions!

SMARTGUARD™ Fire Alarm Recommended

During the engraving process, flames may be produced when working with combustible or easily-flammable materials, such as paper or wood. The SmartGUARD is an optional item that can be set to notify the operator through audio warnings and automatically shutdown the machine as a safety precaution. Cost varies per model; contact for price.



Rotary Attachment Recommended **Increase Opportunities by 100%!**

Allows for engraving round and cylindrical objects (i.e. glasses!).

LaserPro Spirit LS/Mercury III Rotary	560-0101	\$1,210
LaserPro C180II Rotary	560-0113	\$1,210
LaserPro Spirit GLS Rotary	560-0116	\$1,210



NLC Laser Shield Saftey Goggle Recommended

For all CO2 lasers only.

560-0183 \$90



Carrying Case Included!

The Best Software to Compliment Your LaserPro!



CorelDRAW™

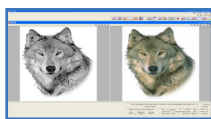


For PC Users:

THE recommended graphics software package for use with GCC lasers!

560-0427 (EDU) \$140

PhotoGraV



A "must have" for engraving photos! PhotoGraV has powerful tools for

processing photos for laser engraving on a variety of common materials.

560-0414 \$399.95

TEC Laser Discovery Kit

Everything you need to get up and running with laser Technologies in your classroom!
Over 600 items!!!!

★Teacher Recommended★



- Plaque bases & plates (variety including sports!)
- All wood pencils
- Wooden key chains with clips
- Wooden Pens & Cases
- Dog tags, multi-colors
- Beaded chains (variety)
- Birch plywood
- Acrylic sheets (variety)
- Magnetic acrylic sheets
- Clips, catches, pins, holders & MORE!

560-0562 \$850

* Note: Prices and availability subject to change without notice. Although we try our very best to always ensure accuracy, TEC cannot be responsible for typographical or photo error within our collateral or on our website.

1-800-338-2238

www.TECedu.com

info@TECedu.com