



Academic Representative



**Technology Education Concepts**  
**www.TECedu.com | 800-338-2238**  
**info@TECedu.com**

More Info at:  
[www.tiertime.com](http://www.tiertime.com)



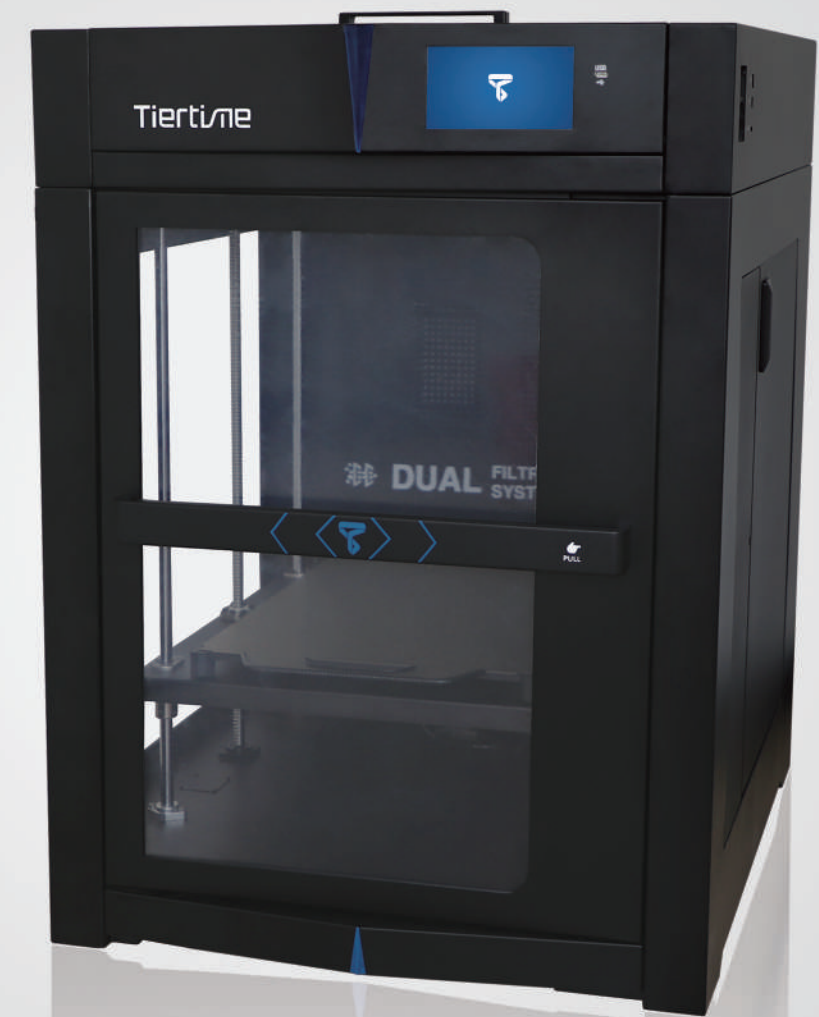
Follow @tiertime on Instagram  
Share Your Prints #Tiertime

Tiertime Corporation  
1765 Landess Ave. #338  
Milpitas, CA 95035, USA

Tel: +1 888 288 6124

# UP 600

## Large Format Powerhouse



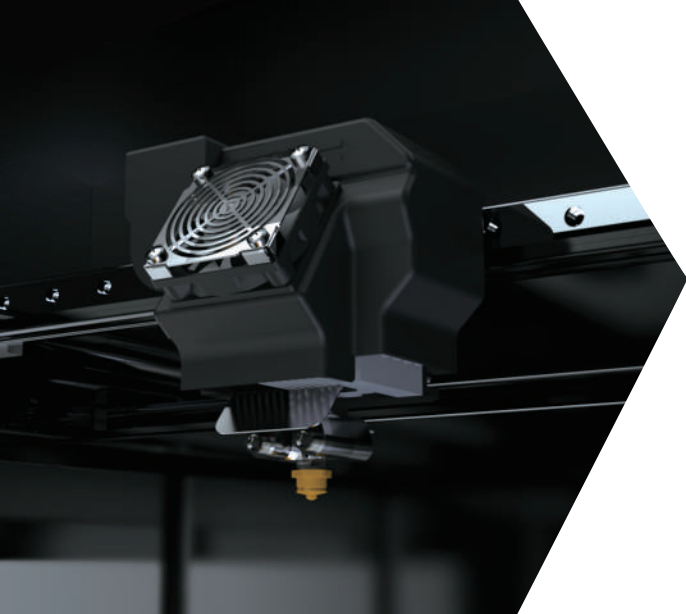
- ▶ Large Print Volume - 500 x 400 x 600mm
- ▶ Heated Build Chamber
- ▶ Embedded Air Filtration System
- ▶ Support WIFI, Ethernet, and USB Connections

Designed and Manufactured by Tiertime Corporation

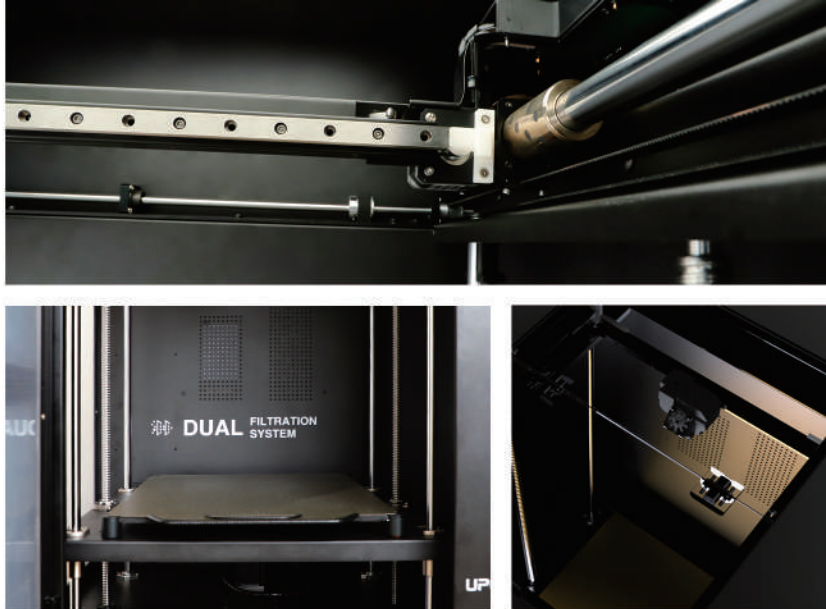
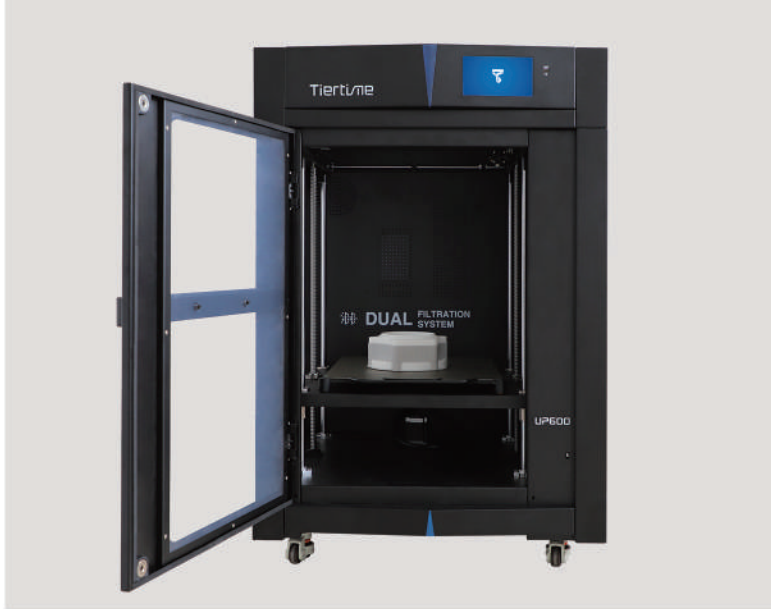
Academic Representative



**Technology Education Concepts**  
**www.TECedu.com | 800-338-2238**  
**info@TECedu.com**



The UP600 industrial 3D printer is designed to tackle very large print jobs with the same ease and precision you have come to expect from other Tiertime printers. It can accurately produce sizable 3D printed parts at an industrial scale. Applications include: engineering, prototyping, short-run production, one-off fabrication, large scale-modeling, medical, R&D, education, prop manufacturing, architecture, and industrial tooling.



### Large Format

At 500 x 400 x 600 mm, the UP600’s build volume is more than twice as large as that of the UP300. It is capable of printing objects 15.7 inches wide by 23.6 inches tall by 19.7 inches deep with a liquid volume of 120 liters or more than 31 US gallons.

### Heated Build Chamber

Objects are printed inside a heated build chamber to minimize deformation caused by high temperature plastic cooling too quickly and absorbing naturally-occurring airborne moisture in the process.

### Connectivity

Connectivity options include Wi-Fi, Ethernet, USB cable, and USB memory stick. Multiple users on a network can send tasks to the printer, which can be monitored and managed via the Tiertime Print Queue.

### Dual Air Filtration

The UP600 incorporates Tiertime’s two-stage HEPA and activated carbon air filtration system, providing maximum UFP and VOC reduction for a safe operating environment.

### Optional Filament Dryer

The Tiertime Dryer helps maintain a pure material state by removing air-induced moisture from filament prior to 3D printing or sealed storage. It features a two-spool capacity, a 48-hour timer, and an adjustable temperature range from 35°C to 75°C.

## Specifications

Printing Technology	MEM(Melting Extrusion Modeling)
Build Volume (XYZ)	500 x 400 x 600mm (19.7 x 15.7 x 23.6 in)
Number of Print Heads	One LT Single Extruder
Nozzle Diameter	0.4mm (included) 0.5, 0.6, 0.8, 1.0mm (sold separately)
Extruder Temperature	< 300°C
Extruder Travel Speed	< 200mm/sec
XYZ Resolution	7, 7, 1 micron
Connectivity	USB, WIFI, Ethernet, USB Stick
Touch Screen	7inch (TFT-LCD), Linux System, 16G
Dimension Accuracy	±0.1 mm / 100 mm
Layer Resolution (mm)	0.1 / 0.15 / 0.2 / 0.25 / 0.3 / 0.35 / 0.4 / User Defined
Calibration and Leveling	Semi-Automatic
Heated Magnetic Build Plate	Perf Glass or Flex Glass, Heated
Dual Filtration System	HEPA and Actived Carbon Filters
Filament Diameter	1.75 mm
Tiertime Filaments	UP Fila ABS, ABS+, PLA, TPU and more
Filament Spool Compatibility	2kg
Pause to Change Filament Type	Yes
Compatible for 3rd Party Materials	Yes

## Software

Supplied Software	UP Studio
Supported OS	Windows and MacOS
Importable File Formats	.up3, .ups, .stl, .obj, .3mf, .ply, .off, .3ds, .gcode

## Special Features

- Heated Build Chamber
- Tiertime Print Queue
- Power Loss Recovery
- Filament Runout Protection
- Powerful Support Structure

## Dimensions

Machine Dimensions	780 x 1150 x 850 mm
Net Weight	120 kg

## Environment

Operating Ambient Temperatures	0 - 30°C, 0 - 40% RH
--------------------------------	----------------------

## Requirements

Power Input	110-240 VAC, 50-60 Hz, 360 W
-------------	------------------------------