



Technology Education Concepts



Dream big,  
start small.

# UP mini 2



- Low-cost
- Compact & portable
- Built-in filtration

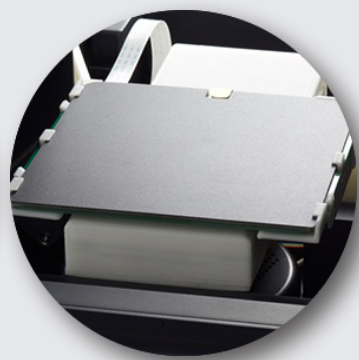
## Only \$599!



Built-in HEPA Air Filtration System



Color Touch Screen Control



Heated Built Platform with Perforated or UP Flex Print Board



Built-in Toolbox Tools included!

*Ideal for schools, makerspaces, libraries and multi-unit installations!*





## Key Features & Benefits

- Fully Enclosed for Safety with Open Door Alert
- Built-in HEPA Air Filtration
- Layer Resolutions from .15 mm to .35 mm Untethered Printing with WI-FI and USB Options; WI-FI support also enables user control of the 3D printer via the mobile App.
- Color Touch Screen Control
- Single Print Head with Quick Change Mechanism
- Automatic Nozzle Height Detection, software assisted leveling
- Heated Built Platform with Perforated Print Board or UP Flex Print Board
- Prints using ABS, ABS+ and PLA materials - many colors available!
- Aluminum Handle for Portability
- Separate Spool Container with Build-in Toolbox
- Full 1-Year Manufacturer's Warranty!

## UP mini 2

## Specifications

Fully-Enclosed & HEPA Filtered  
Feature Packed  
Affordable

Printing Technology	Melted Extrusion Modeling (MEM)
Build Volume	120(w) x 120(d) x 120(h) mm
Print-head	Single, quick-change
Layer thickness	0.15, 0.20, 0.25, 0.30 0.35, 0.40mm
Supporting Structure	Smart-Support™
Platform Leveling	Build Platform Type
Build Platform Type	Heated w/ UP Flex™ or UP Per™ build surfaces
Un-tethered Printing	Via UP Link™ integrated WiFi connectivity
Advanced Features	UP ClearAir™ HEPA System UP Touch™ integrated LCD controls
Supported Printing Material	(1.75mm) ABS, ABS+, PLA
Bundled Software	UP STUDIO™
Compatible Formats	.STL, .UP3, .UPP
Connectivity	USB, WiFi
Operating Systems	PC   MACOS   IOS   Android
Power Supply	110-240 VAC, 50-60 Hz, 90W
Chassis	Metal frame w/ injected molded plastic enclosure, cast- aluminum retractable handle
Printer Weight	8 KG / 17.6 lbs.
Dimensions	255mm (w) x 365mm (h) x 385mm (d)
Onboard Controls	Integrated Touch-screen LCD Panel

