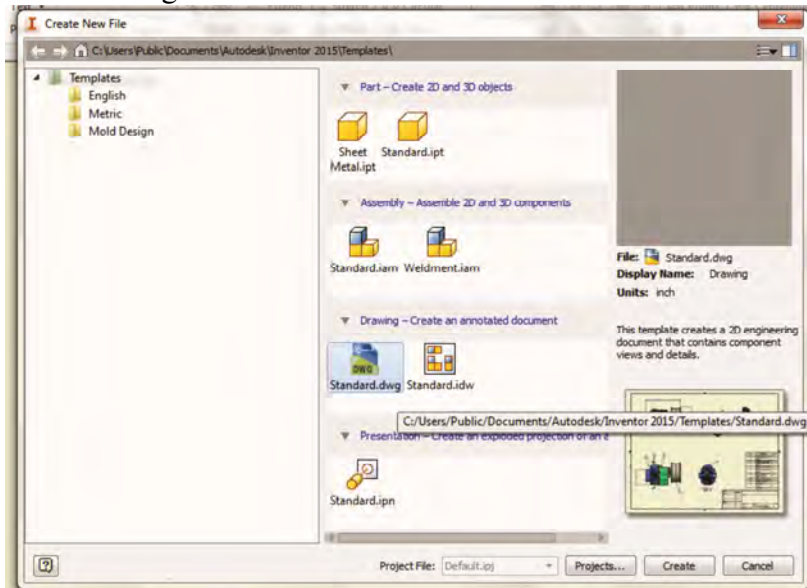
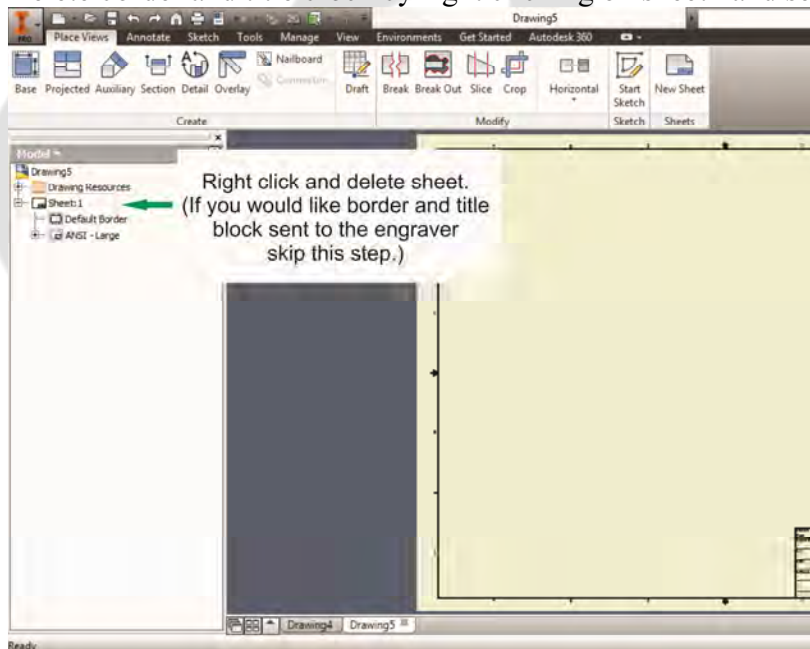


Using Inventor with GCC laser engravers

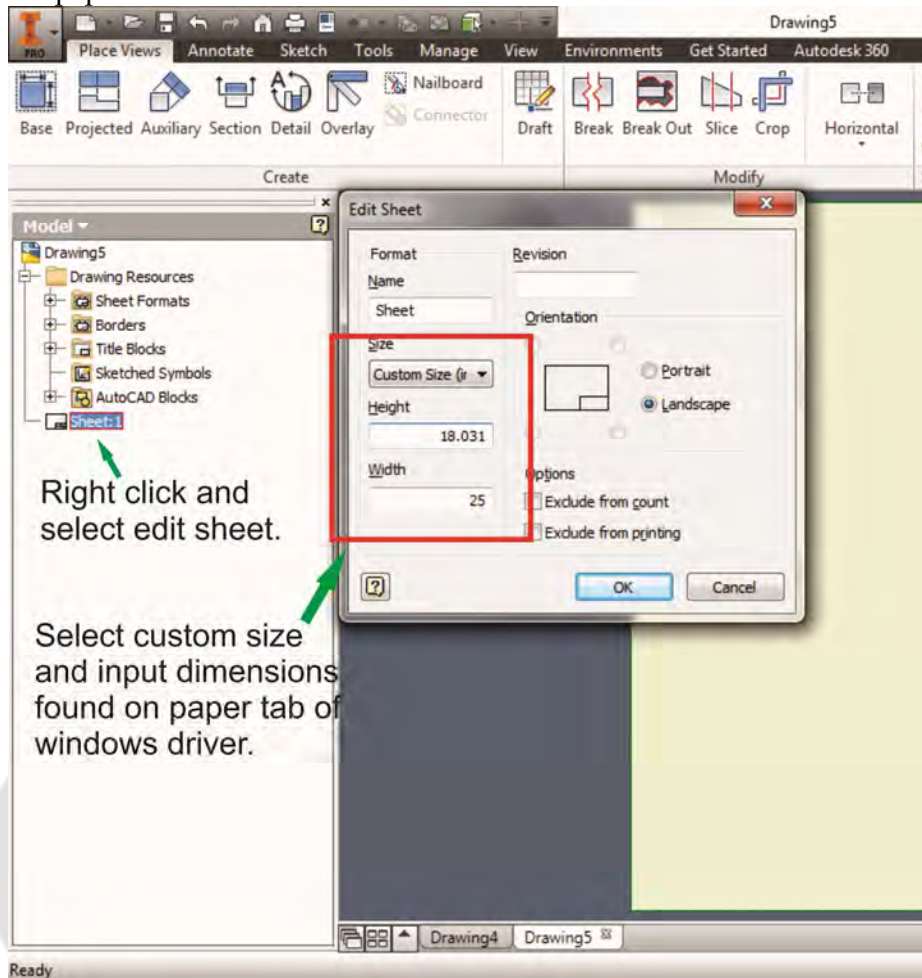
1. Start drawing.



2. Delete border and title block by right clicking on sheet1 and selecting delete.

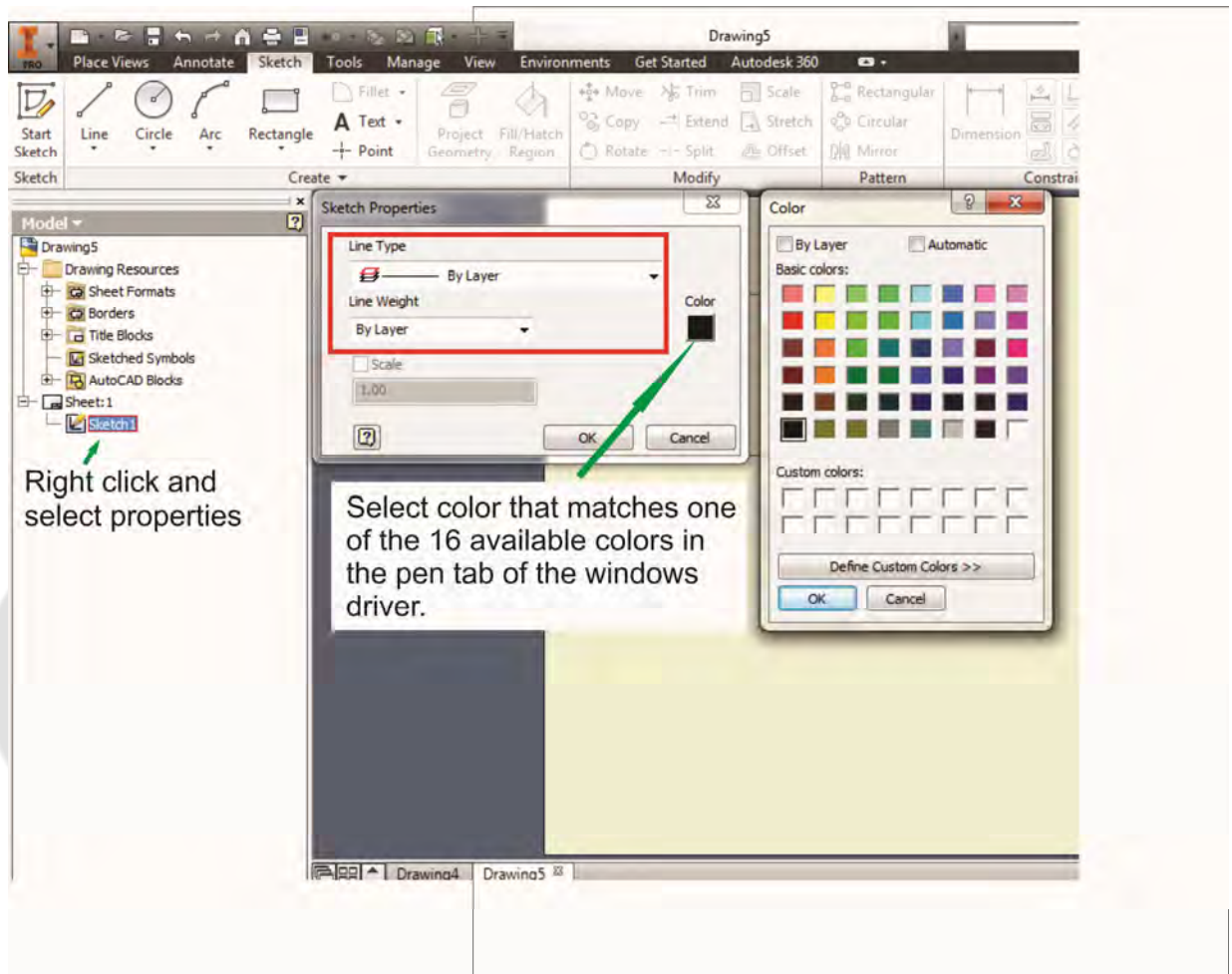


3. Set sheet size to match working area of engraver. Engraver working area can be found on the paper tab of the windows driver.



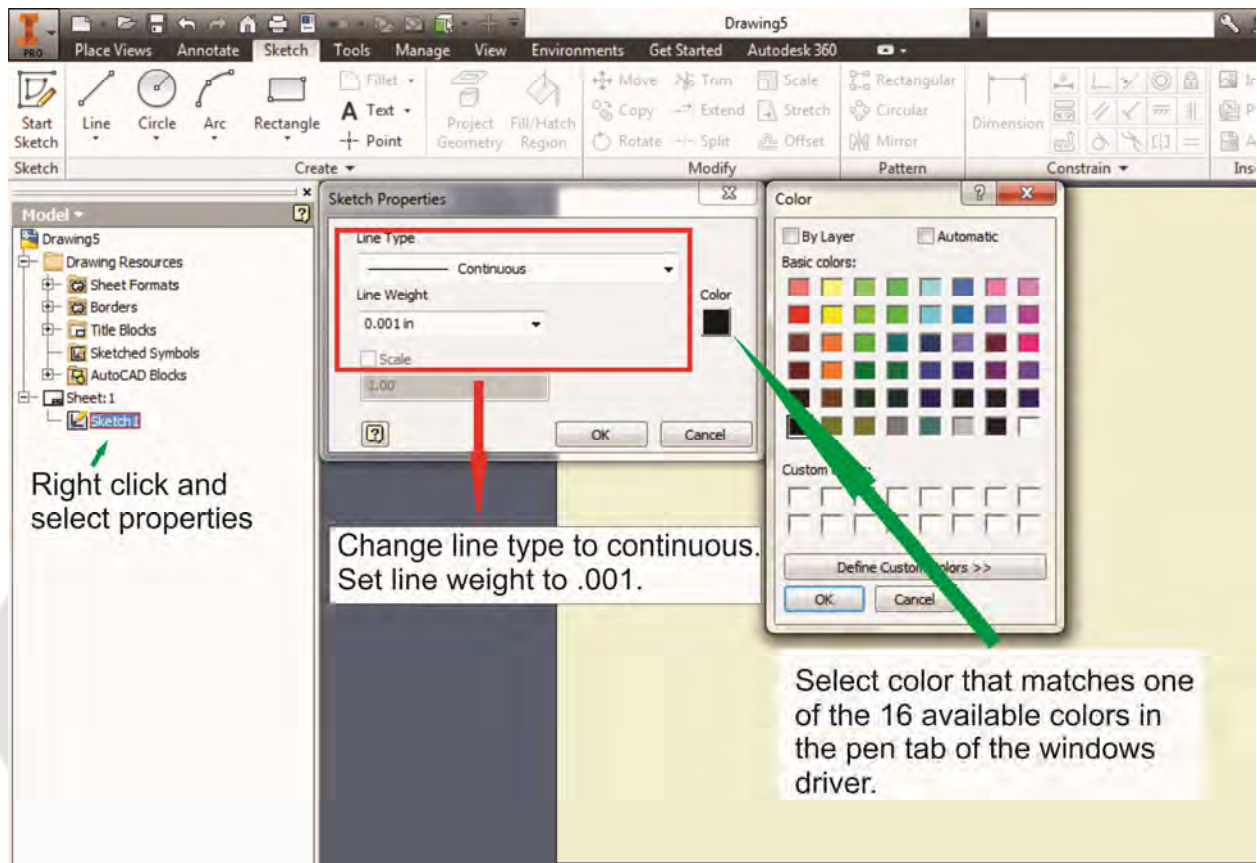
4. Start sketch.

5. Engraving
 - a. Finish sketch.
 - b. Right click on sketch and select properties.
 - c. Line Type: By Layer
 - d. Line Weight: By Layer
 - e. Set color to match one of the 16 colors available in the pen tab of the windows driver.



6. Cutting

- Finish sketch.
- Right click on sketch and select properties.
- Line Type: Continuous
- Line Weight: .001 in.
- Set color to match one of the 16 colors available in the pen tab of the windows driver.



Note: All objects created in one particular sketch will have the same properties meaning all will engrave or all will cut. If you would like to engrave and cut in the same job you will need at least two sketches, one with all the engravings and another with all the cuts, to do so properly.

Dan Lopez
GCCA 2014