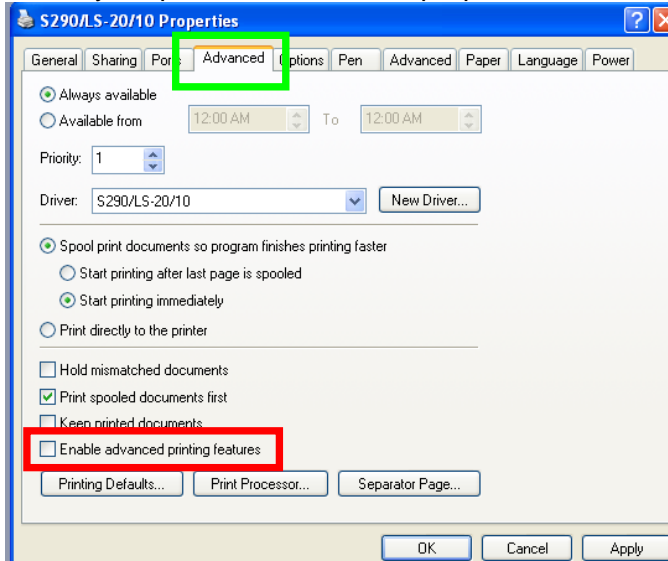


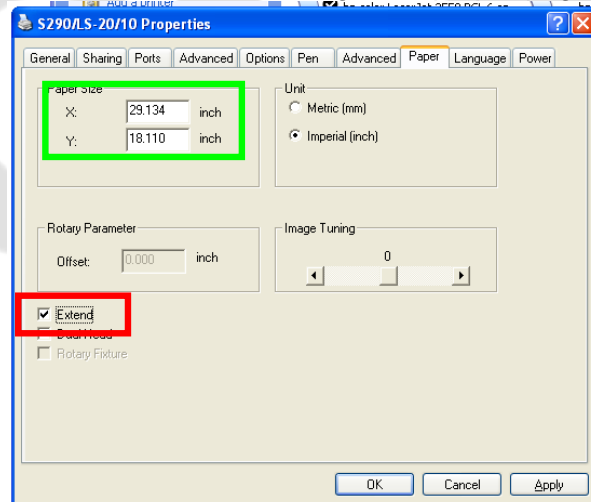
## Using Illustrator with Laser Pro engravers

1. Select your printer and choose “properties” Click on the “Advanced” tab to the left.



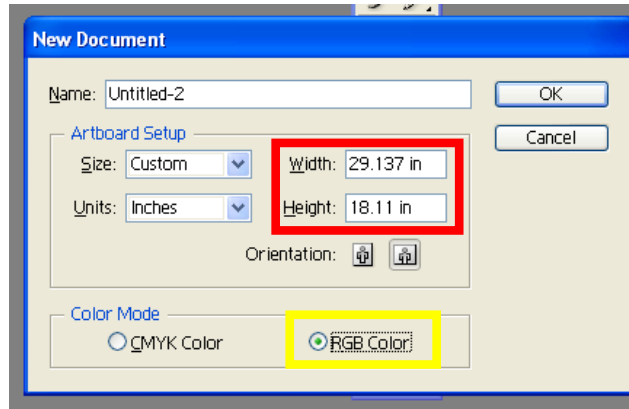
- a. Make sure that the “Enable advanced printing features” is NOT checked.

2. Locate the page size of your engraver.
  - a. This information can be found on the paper tab of your driver. Be sure to have the extend mode selected to get the proper page size.

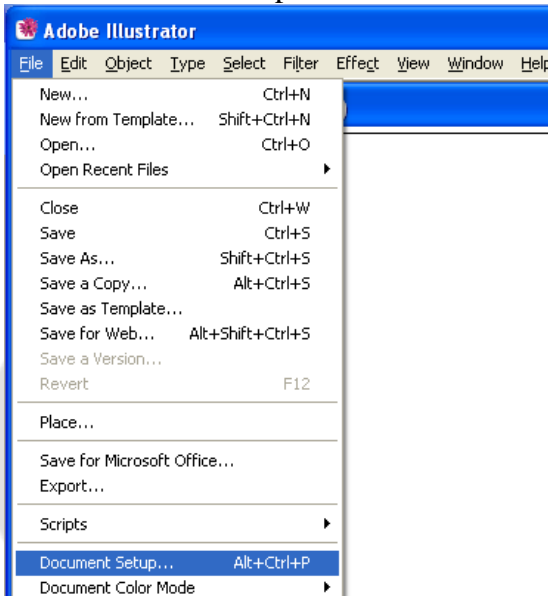


- b. The X value corresponds to width while the Y value corresponds to height in Illustrator.

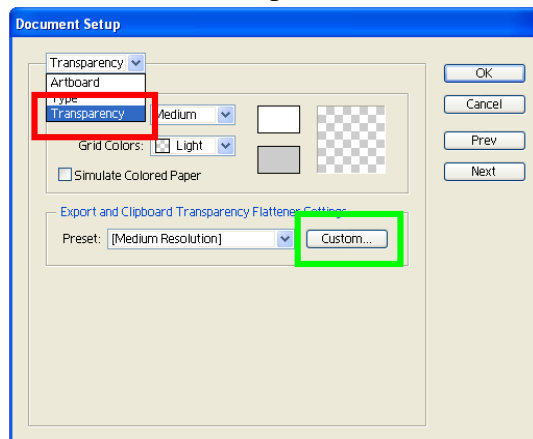
3. Set the page size of your new document in Illustrator.
  - a. Make sure to choose RGB color when setting up your new document.



4. After clicking OK you should be in the working area of Illustrator.
5. Select Document Properties from the file menu.

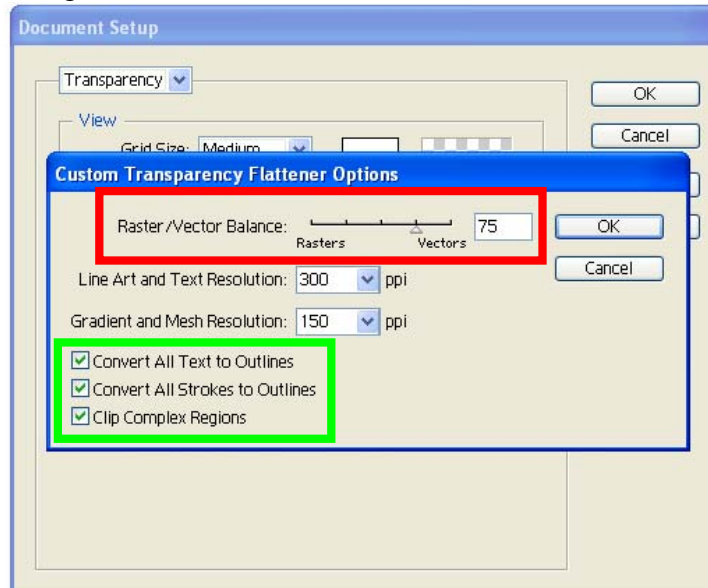


- a. In the document setup window use the drop down box to select transparency.



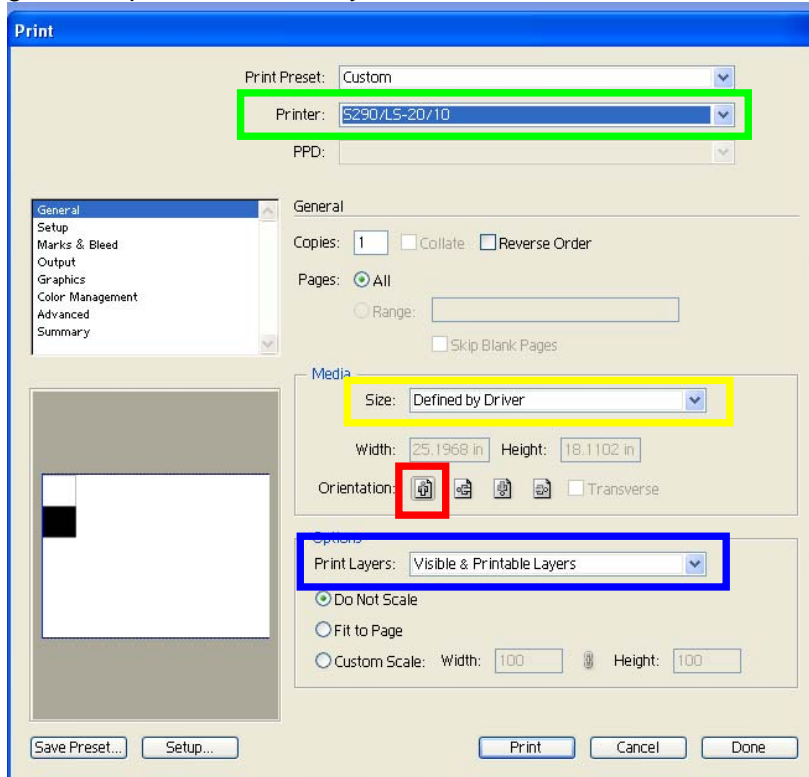
- b. Next click the custom button.

- c. Using the slider bar set raster/vector balance to at least 75.



- d. Make sure that convert text to outlines, convert all strokes to outlines, and clip complex regions are selected.

6. Configure printer setting. Select print from the file menu. Print window will open with general options selected by default.

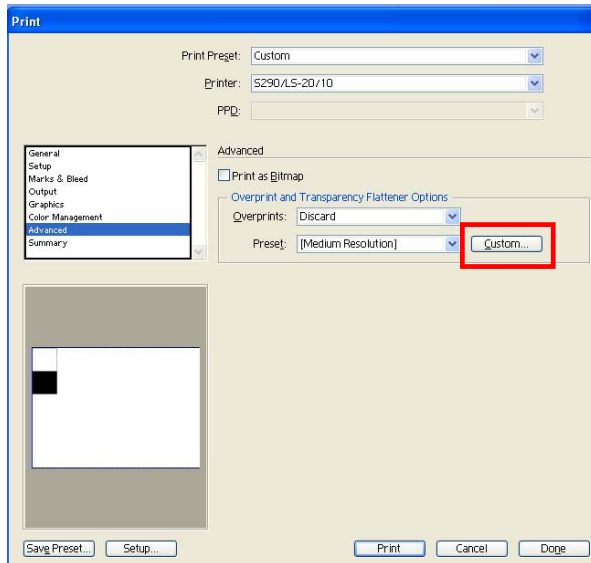


- a. Under printer select your laser engraver.
  - b. Under size select "Defined by Driver".
  - c. Under Orientation select the "Portrait"
  - d. Under Print Layers select "Visible & Printable Layers".
  - e. Select "Do Not Scale".
7. Select Color Management in the Print window.

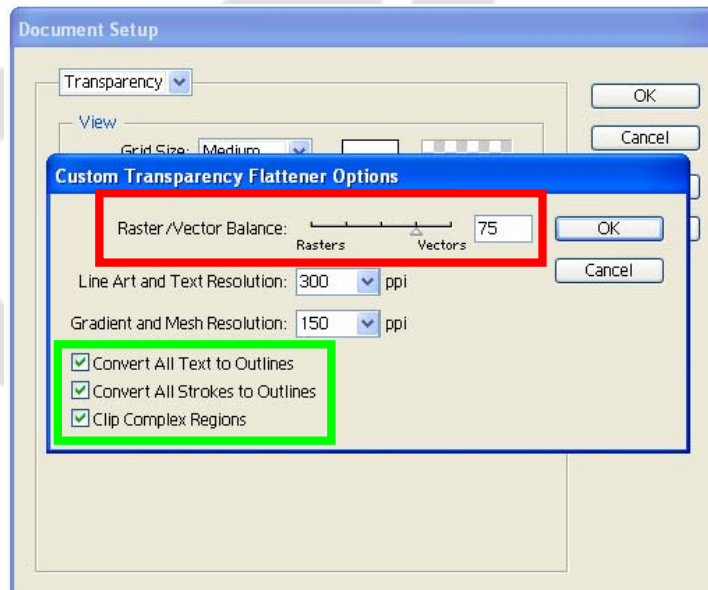


- a. Under Profile select "Same as Source".
- b. Under Source Space please make sure "ColorMatch RGB" is selected.

8. Select Advanced in the Print window.

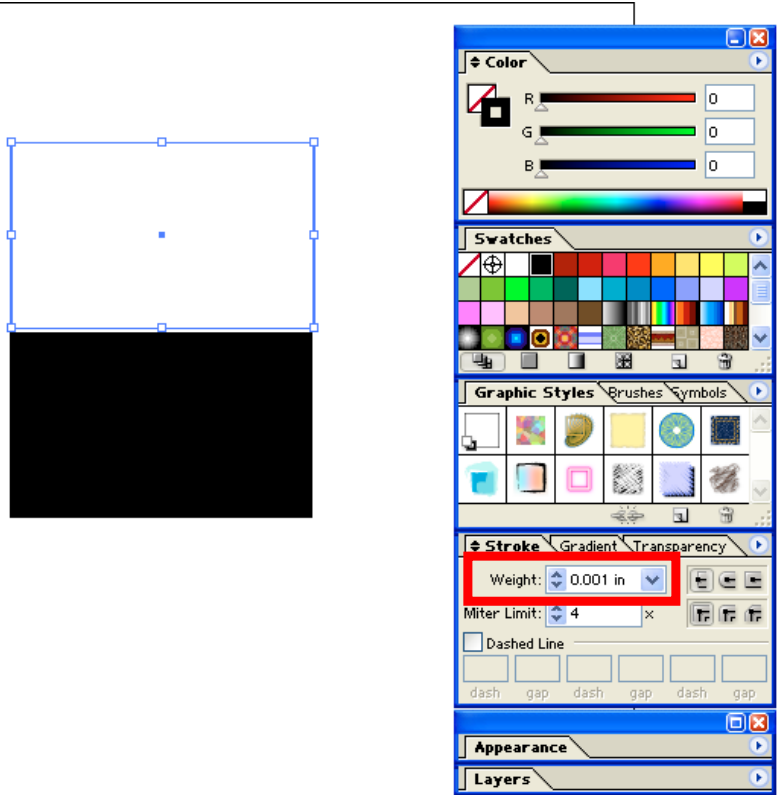


- a. Click on the custom button next to Preset. Once again use the settings from step 4c.

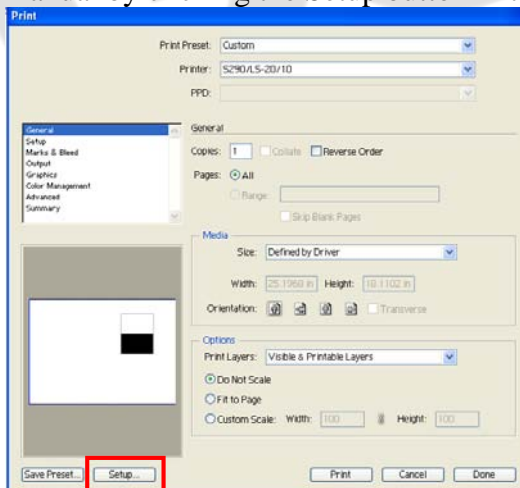


- b. Make sure that convert text to outlines, convert all strokes to outlines, and clip complex regions are selected.

9. Stroke Weight must be set below .003 in (Suggested setting is .001in) to achieve a vector cut.



10. Speed and power settings can be adjusted in the printer driver as discussed in the user manual by clicking the Setup button in the General area of the Print window.





GCC AMERICA, INC.  
323 Paseo Tesoro  
Walnut, California 91789  
Tel: (909) 718-0248 Fax: (909) 718-0251

**Innovation**  
*With a Human Touch*

2011

