



# CubeX 3D printer

## Print Tip Replacement

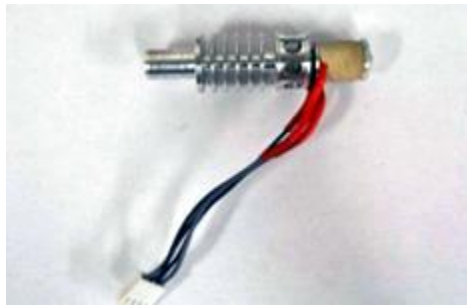


# Your CubeX 3D printer

## Print tip replacement

So you are the owner of a CubeX and you have to replace a print tip? We have gathered information from what you need to how to do the print tip change.

What you need:



Print tip assembly



2.5mm hex driver



Pliers

**Before beginning this process please remove all filament from the print jets and check that your print pad is level.** For instructions on how to do this please refer to the [CubeX user guide](#).

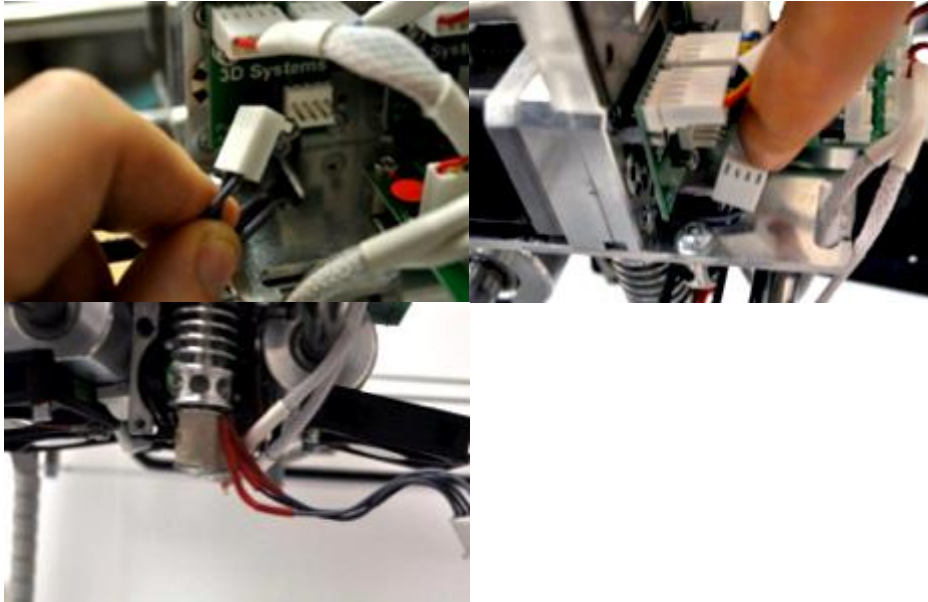
### REMOVING THE DAMAGED PRINT TIP

**1**

Turn off the CubeX and Unplug it from the mains power.

**2**

Unplug the print tip from the Print jet sensor board and feed the wire down the hole to the print tip.



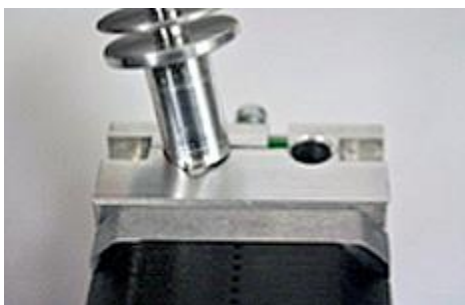
3

Unfasten the print tip holding bolt.



4

The print tip and print jet are assembled by sliding the print tip into the print jet and twisting it (as pictured).



5

To remove the print jet you will need to twist it and pull down, eventually you will find the correct orientation and the print tip should easily slide out.



## INSTALLING THE NEW PRINT TIP

**1**

Feed the print tip wires up through the print jet carriage and plug them into the Print Jet sensor board.



**2**

Slide the new print tip into the print jet and turn it until the print tip wires are orientated to travel straight up to the Print Jet sensor board.



## LEVELING THE PRINT TIPS FOR CUBEX DUO/TRIO

**1**

\*/

For a single print jet please see [Fastening the print tip on a CubeX](#).

**1**

Power on the CubeX printer.

**2**

To clean the nozzles for levelling, put the CubeX printer into PJ-Control mode. Heat all of the print jets EXCEPT for the new one to 230° and clean of any plastic debris with pliers. Allow the Print Jets to cool down.



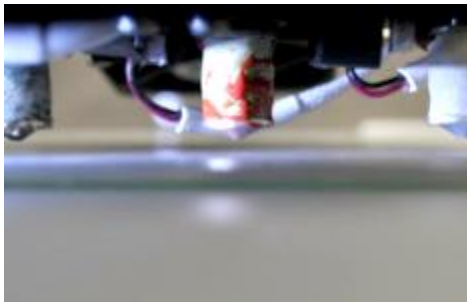
3

Put the CubeX printer into manual move mode.



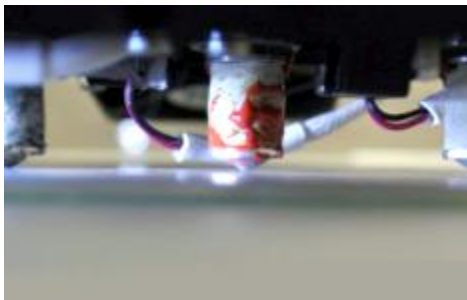
4

Raise the print pad until it is approximately 5mm away from the print tips.



5

Slowly raise the print pad until it lifts the new print tip in line with the others. All three print tips should be touching the bed without putting any pressure on it.



6

Turn the CubeX printer off and unplug it from the mains power supply.

7

Using the 2.5mm hex driver, tighten the print tip holding bolt (pictured) to lock the print tip in place.



8

With the print tips levelled you can now turn on the CubeX printer and set the print tip offsets.

## SETTING PRINT TIP OFFSETS

See the [CubeX user guide](#) for instructions on how to set your print tip offsets.

- [Download the CubeX Duo calibration file](#)
- [Download the CubeX Trio calibration file](#)

## FASTENING THE PRINT TIP ON A CUBEX

1

A CubeX with a single print jet does not have a second or third nozzle to reference the print tip level. Instead you have to use the CubeX wiping stick.

1

Power on the CubeX printer.

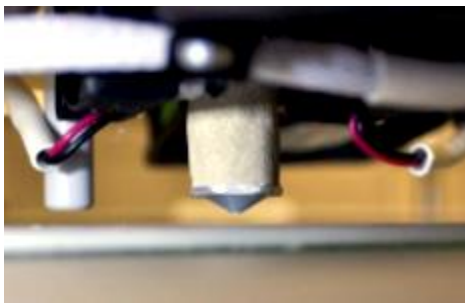
2

Put the CubeX into manual move.



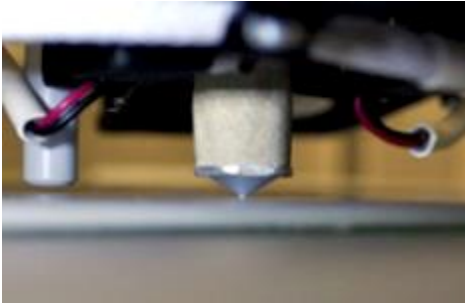
3

Raise the print pad until it is approximately 5mm away from the print tip.



4

Slowly raise the print pad until the print tip is touching it.



**5**

Continue raising the print pad until there is approximately 0.5mm between the print pad and the CubeX wiping stick.

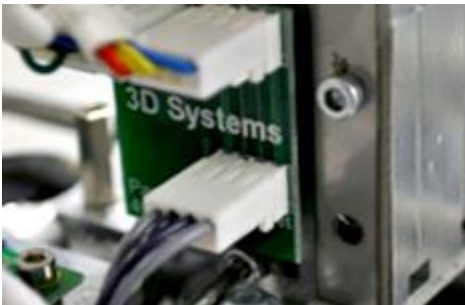


**6**

Turn the CubeX printer off and unplug it from the mains power supply.

**7**

Using the 2.5mm hex driver, tighten the print tip holding bolt (pictured) to lock the print jet in place.



**8**

With the print tip fastened you can now turn on the CubeX printer and start printing.